



**Meetings, Conferences  
& Business Events**



**Hello. My name is Denise and I am here to lend my expertise in crafting unforgettable corporate events that align seamlessly with your company's objectives and values. I am thrilled at the opportunity to collaborate with you and help bring your corporate events to the next level.**

**Elevate your corporate events to a new height by choosing one of our hotels as your preferred venue. With eight venues to choose from, all with their own uniqueness, I know we can provide you with the perfect setting for your business gatherings. From well-equipped meeting rooms to elegant ballrooms, we cater for all kinds of events.**

If you want to find out more please get in touch at [\*\*denise.reynolds@manorviewgroup.co.uk\*\*](mailto:denise.reynolds@manorviewgroup.co.uk) and I'd be delighted to meet for a coffee to discuss your requirements.

# Welcome:

Manorview Group provides a wide variety of function and event spaces across central Scotland.

Whatever your business requirements, we understand the importance of making things happen at the right time. Our attention to the smallest details will give you peace of mind, leaving you free to focus on the business at hand.

Our dedicated Corporate Team can create bespoke events that are tailored to your requirements.

All of our venues offer attractive rates on meetings, conferences, seminars and much more. And if your booking includes an overnight stay, you can relax in beautiful surroundings, enjoy a peaceful sleep, and give yourself the best possible start to the day with a full Scottish breakfast.

We look forward to welcoming you to Manorview.

## Manorview

T: 01505 704348 | Bowfield Road, Howwood PA9 1DZ

E: [Corporatesales@Manorviewgroup.co.uk](mailto:Corporatesales@Manorviewgroup.co.uk) | [Manorviewgroup.co.uk](http://Manorviewgroup.co.uk)

## BOCLAIR HOUSE



5-6

## Bowfield



7-8

## BRISBANE HOUSE



9-10

## THE BUSBY



11-12

## CORNHILL CASTLE



13-14

## LYNNHURST



15-16

## THE REDHURST



17-18

## THE TORRANCE



19-20

## TARBET HOTEL



21-22

# Boclair House

Up to 200 Delegates | Exclusive use

A magnificent red sandstone Tudor Gothic Mansion, located in Bearsden, 15 minutes from Glasgow city centre. Twelve unique suites available for overnight accommodation with nearby train station.

## Meeting & Event Suites

### Grand Ballroom

MAXIMUM CAPACITY  
**200**

ROOM LENGTH  
**13.7m**

ROOM WIDTH  
**18.4m**

ROOM HEIGHT  
**4m**

### Grand Ballroom Layout (maximum numbers)

#### BANQUET



200

#### THEATRE



160

#### CABARET



90

#### CLASSROOM



50

#### BOARDROOM



80

### Annabel's

MAXIMUM CAPACITY  
**30**

ROOM LENGTH  
**13m**

ROOM WIDTH  
**7m**

ROOM HEIGHT  
**3.5m**

## Amenities List

- ✓ Free Parking
- ✓ Onsite Accommodation
- ✓ Natural Daylight
- ✓ Air Conditioning
- ✓ High Speed WiFi
- ✓ Private Bathrooms
- ✓ Private Bar
- ✓ Reception/Breakout Area(s)
- ✓ Dance floor
- ✓ LCD Projector
- ✓ Screen
- ✓ PA System
- ✓ Clicker
- ✓ Connection Cables



# Bowfield Hotel & Spa

Up to 110 Delegates

Only 10 minutes from Glasgow Airport, nestled in the beautiful Scottish countryside, let Bowfield Hotel & Spa take care of all your corporate needs.

Enjoy access to our gym and health club included in overnight stays, and after a hard day of work, why not take some me time and submerge yourself in the wonders of our luxurious spa. All your needs taken care of in one place.

## Meeting & Event Suites

### Bowfield Suite

MAXIMUM CAPACITY  
**110**

ROOM LENGTH  
**12.5m**

ROOM WIDTH  
**8.7m**

ROOM HEIGHT  
**3.9m pitched down to 2.5m either side**

### Bowfield Suite Layout (maximum numbers)

#### BANQUET



110

#### THEATRE



90

#### CABARET



48

#### CLASSROOM



48

#### BOARDROOM



40

### Elliston

MAXIMUM CAPACITY  
**90**

ROOM LENGTH  
**12.6m**

ROOM WIDTH  
**6.7m**

ROOM HEIGHT  
**4.6m pitched down to 2.4m**

### Roebank

MAXIMUM CAPACITY  
**35**

ROOM LENGTH  
**9.6m**

ROOM WIDTH  
**5.5m**

ROOM HEIGHT  
**2.6m**

### Kenmore

MAXIMUM CAPACITY  
**15**

ROOM LENGTH  
**5.3m**

ROOM WIDTH  
**5.5m**

ROOM HEIGHT  
**2.6m**

## Amenities List

- ✓ Free Parking
- ✓ Onsite Accommodation
- ✓ Natural Daylight
- ✓ Air Conditioning
- ✓ High Speed WiFi
- ✓ Private Bathrooms
- ✓ Private Bar
- ✓ Reception/Breakout Area(s)
- ✓ Dance floor
- ✓ LCD Projector
- ✓ Screen
- ✓ PA System
- ✓ Connection Cables



## GDS Codes:

Amadeus GLAAEI | Sabre 85501 | Galileo/Apollo AK889 | Worldspan 10980

# Brisbane House

Up to 180 Delegates | Available for exclusive use

Located on the Largs seafront, Brisbane House is the ideal venue to escape the city and host your corporate event in the relaxed seaside town.

We can arrange events and activities that can help team building, moral and promote a healthy working environment. From high-speed boat trips, sailing and kayaking, to golfing, falconry, and quad-biking, we can take care of all your outdoor requests to complete an unrivalled experience.

## Meeting & Event Suites

### Brisbane Suite

MAXIMUM CAPACITY  
**180**

ROOM LENGTH  
**16.5m**

ROOM WIDTH  
**15.5m**

ROOM HEIGHT  
**2.5m**

### Brisbane Suite Layout (maximum numbers)

#### BANQUET



150

#### THEATRE



180

#### CABARET



120

#### CLASSROOM



100

#### BOARDROOM



60

## Amenities List

- ✓ Free Parking
- ✓ Onsite Accommodation
- ✓ Natural Daylight
- ✓ Air Conditioning
- ✓ High Speed WiFi
- ✓ Private Bathrooms
- ✓ Private Bar
- ✓ Reception/Breakout Area(s)
- ✓ Dance floor
- ✓ LCD Projector
- ✓ Screen
- ✓ PA System
- ✓ Connection Cables



BRISBANE  
HOUSE

14 Greenock Road, Largs, KA30 8NE | 01475 687200 | corporatesales@manorviewgroup.co.uk | brisbanehousehotel.co.uk

# Busby Hotel

Up to 180 Delegates

Located in the Southside of Glasgow, less than 20 minutes from Glasgow City Centre, the award winning Busby Hotel can be found in Clarkston. It has two beautiful conference rooms with different offerings so that all your needs are met. Its secret weapon is its balcony that can be used as a drinks reception, break out area or why not have lunch al fresco.

## Meeting & Event Suites

### Busby Suite

MAXIMUM CAPACITY  
**180**

ROOM LENGTH  
**24.1m**

ROOM WIDTH  
**8.6m**

ROOM HEIGHT  
**2.6m**

### Busby Suite Layout (maximum numbers)

#### BANQUET



144

#### THEATRE



170

#### CABARET



160

#### CLASSROOM



80

#### BOARDROOM



60

### Cartside Suite

MAXIMUM CAPACITY  
**70**

ROOM LENGTH  
**13.7m**

ROOM WIDTH  
**6.6m**

ROOM HEIGHT  
**2.6m**

## Amenities List

- ✓ Free Parking
- ✓ Onsite Accommodation
- ✓ Natural Daylight
- ✓ Air Conditioning
- ✓ High Speed WiFi
- ✓ Private Bathrooms
- ✓ Private Bar
- ✓ Reception/Breakout Area(s)
- ✓ Dance floor
- ✓ LCD Projector
- ✓ Screen
- ✓ PA System
- ✓ Laser Pointer
- ✓ Clicker
- ✓ Connection Cables
- ✓ Lectern



THE BUSBY

1 Field Road, Clarkston, Glasgow, G76 8RX | 0141 644 2661 | corporatesales@manorviewgroup.co.uk | thebusbyhotel.co.uk

## GDS Codes

Amadeus GLAAFR | Sabre 458216 | Galileo/Apollo D2499 | Worldspan GLATB

# Cornhill Castle

Up to 200 Delegates | Available for exclusive use

Located just off the M74, this secluded 12 bedroom castle with a further 7 lodges in the grounds, is easily accessible from Glasgow, Edinburgh and Carlisle. Private grounds for team building activities and helipad available on request.

## Meeting & Event Suites

### The Ballroom

MAXIMUM CAPACITY **250**      ROOM LENGTH **21m**      ROOM WIDTH **17m**      ROOM HEIGHT **3.2m**

### The Ballroom (maximum numbers)

#### BANQUET



180

#### THEATRE



150

#### CABARET



100

#### CLASSROOM



100

#### BOARDROOM



60

### Conservatory

MAXIMUM CAPACITY **80**      ROOM LENGTH **15m**      ROOM WIDTH **6.8m**      ROOM HEIGHT **4.7m**

### Private Dining Room

MAXIMUM CAPACITY **20**      ROOM LENGTH **5.4m**      ROOM WIDTH **5.1m**      ROOM HEIGHT **3.4m**

## Amenities List

- ✓ Free Parking
- ✓ Onsite Accommodation
- ✓ Natural Daylight
- ✓ Air Conditioning
- ✓ High Speed WiFi
- ✓ Private Bathrooms
- ✓ Private Bar
- ✓ Reception/Breakout Area(s)
- ✓ Dance floor
- ✓ Helipad
- ✓ Private grounds for activities
- ✓ LCD Projector
- ✓ Screen
- ✓ PA System
- ✓ Connection Cables



CORNHILL  
CASTLE

Biggar, South Lanarkshire, ML12 6QE | 01899 220 001 | corporatesales@manorviewgroup.co.uk | cornhillcastle.co.uk

## GDS Codes:

Amadeus EDICOR | Sabre 465190 | Galileo/Apollo E5273 | Worldspan EDICO



# Lynnhurst

Up to 200 Delegates

This beautiful Victorian property offers a unique mix of traditional and modern Scottish architecture. Located less than 10 minutes from Glasgow Airport in the Renfrewshire town of Johnstone.

## Meeting & Event Suites

### Grand Ballroom

MAXIMUM CAPACITY <b>200</b>	ROOM LENGTH <b>14.5m</b>	ROOM WIDTH <b>15.5m</b>	ROOM HEIGHT <b>2.9m</b>
--------------------------------	-----------------------------	----------------------------	----------------------------

### Grand Ballroom Layout (maximum numbers)

#### BANQUET



200

#### THEATRE



170

#### CABARET



100

#### CLASSROOM



170

#### BOARDROOM



26

### Weavers Suite

MAXIMUM CAPACITY <b>30</b>	ROOM LENGTH <b>8.2m</b>	ROOM WIDTH <b>5.2m</b>	ROOM HEIGHT <b>3.2m</b>
-------------------------------	----------------------------	---------------------------	----------------------------

### Walton Suite

MAXIMUM CAPACITY <b>24</b>	ROOM LENGTH <b>7.3m</b>	ROOM WIDTH <b>4.6m</b>	ROOM HEIGHT <b>3.2m</b>
-------------------------------	----------------------------	---------------------------	----------------------------

### Brookfield Suite

MAXIMUM CAPACITY <b>60</b>	ROOM LENGTH <b>9.4m</b>	ROOM WIDTH <b>7.7m</b>	ROOM HEIGHT <b>2.6m</b>
-------------------------------	----------------------------	---------------------------	----------------------------

## Amenities List

- ✓ Free Parking
- ✓ Onsite Accommodation
- ✓ Natural Daylight
- ✓ Air Conditioning
- ✓ High Speed WiFi
- ✓ Private Bathrooms
- ✓ Private Bar
- ✓ Reception/Breakout Area(s)
- ✓ Dance floor
- ✓ LCD Projector
- ✓ Screen
- ✓ PA System
- ✓ Connection Cables
- ✓ Lectern



### GDS Codes:

# Redhurst Hotel

Up to 200 Delegates

The Redhurst Hotel is located in the leafy suburb of Giffnock, in Glasgow's south side. We have 18 bedrooms and are in a convenient location near a train station.

Choose from a variety of fantastic spaces for your next corporate event, whether it is an intimate space in our Clarkston Suite, a corporate dinner in our Private Dining Room or something more elevated in our Grand Ballroom, we have got you covered. Our restaurant, bar and stunning outdoor terrace will only add to your experience here at the Redhurst.

## Meeting & Event Suites

**Grand Ballroom** (irregular space, maximum measurements)

MAXIMUM CAPACITY  
**200**

ROOM LENGTH  
**17.8m**

ROOM WIDTH  
**16m**

ROOM HEIGHT  
**3.25m**

## Grand Ballroom Layout (maximum numbers)

BANQUET



180

THEATRE



200

CABARET



180

CLASSROOM



200

BOARDROOM



35

**Clarkston Suite** (irregular space, maximum measurements)

MAXIMUM CAPACITY  
**70**

ROOM LENGTH  
**12.4m**

ROOM WIDTH  
**7.2m**

ROOM HEIGHT  
**2.6m**

**Private Dining Room**

MAXIMUM CAPACITY  
**18**

ROOM LENGTH  
**9.7m**

ROOM WIDTH  
**3m**

ROOM HEIGHT  
**2.5m**

## Amenities List

- ✓ Free Parking
- ✓ Onsite Accommodation
- ✓ Natural Daylight
- ✓ Air Conditioning
- ✓ High Speed WiFi
- ✓ Private Bathrooms
- ✓ Private Bar
- ✓ Reception/Breakout Area(s)
- ✓ Dance floor
- ✓ LCD Projector
- ✓ Screen
- ✓ PA System
- ✓ Clicker
- ✓ Connection Cables



# Torrance Hotel

Up to 160 Delegates

Nestled in the heart of East Kilbride Village, close to the M74 and with direct road and rail access to Glasgow city centre. Let us take care of all you conference needs from an intimate meeting to a large conference. Our conservatory is a must see and is also available in conjunction with your corporate event.

## Meeting & Event Suites

### Torrance Suite

MAXIMUM CAPACITY

**160**

ROOM LENGTH

**16m**

ROOM WIDTH

**10.5m**

ROOM HEIGHT

**3.5m**

### Torrance Suite Layout (maximum numbers)

**BANQUET**



**140**

**THEATRE**



**140**

**CABARET**



**70**

**CLASSROOM**



**60**

**BOARDROOM**



**24**

### Village Suite

MAXIMUM CAPACITY

**50**

ROOM LENGTH

**11.5m**

ROOM WIDTH

**7.8m**

ROOM HEIGHT

**2.5m**

### Conservatory

MAXIMUM CAPACITY

**45**

ROOM LENGTH

**12.4m**

ROOM WIDTH

**5.3m**

ROOM HEIGHT

**2.3-3m**

(sloped ceiling)

## Amenities List

- ✓ Free Parking
- ✓ Onsite Accommodation
- ✓ Natural Daylight
- ✓ Air Conditioning
- ✓ High Speed WiFi
- ✓ Private Bathrooms
- ✓ Private Bar
- ✓ Private entrance (Village Suite & Conservatory)
- ✓ Reception/Breakout Area(s)
- ✓ Dance floor
- ✓ LCD Projector
- ✓ Screen
- ✓ PA System
- ✓ Clicker
- ✓ Connection Cables



THE  
**TORRANCE**

135 Main Street, East Kilbride, G74 4LN | 01355 225241 | corporatesales@manorviewgroup.co.uk | thetorrancehotel.co.uk

## GDS Codes:

Amadeus GLAFU | Sabre 260696 | Galileo/Apollo AU731 | Worldspan 20812

# Tarbet Hotel

Up to 30 Delegates

The Tarbet Hotel is located on the A83, an iconic Scottish route on the banks of Loch Lomond. Escape the city to the heart of one of Scotland's most picturesque spots for your corporate away days and more. From breakfast meetings to team building days, our highly experienced team are here to ensure your day runs efficiently.

The Tarbet Hotel is a perfect base for team activities to explore Loch Lomond and the Trossachs. Use The Tarbet as your base and we can arrange events and activities that can help team building, moral and promote a healthy working environment, including organised boat tours or local walking routes. We also have a variety of twin and double rooms for overnight accommodation by the loch.

## Meeting & Event Suite

**The Buttery** (irregular space, maximum measurements)

MAXIMUM CAPACITY  
**30**

ROOM LENGTH  
**9.3m**

ROOM WIDTH  
**7.6m**

ROOM HEIGHT  
**3.1m**

## The Buttery Layout (maximum numbers)

**BANQUET**



**16**

**THEATRE**



**30**

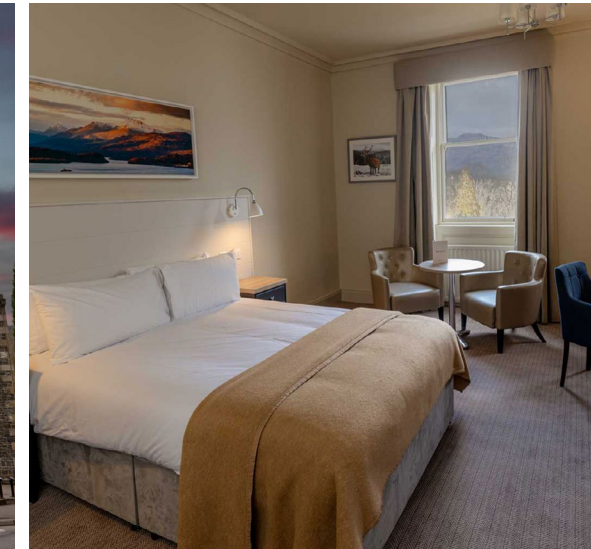
**BOARDROOM**



**12**

## Amenities List

- ✓ Free Parking
- ✓ Onsite Accommodation
- ✓ Natural Daylight
- ✓ High Speed WiFi
- ✓ Reception/Breakout Area
- ✓ LCD Projector
- ✓ Screen
- ✓ Pool Table
- ✓ Stunning Loch Lomond Views
- ✓ Connection Cables



TARBET  
HOTEL



For all enquiries:  
[corporatesales@manorviewgroup.co.uk](mailto:corporatesales@manorviewgroup.co.uk)